



# QUICK START GUIDE

VISTA Pro  
Earth Mined and HPHT/CVD Segregator

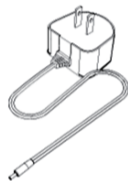
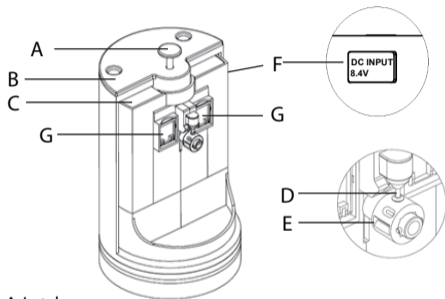
Model No.: GEM-0020-01

V-01B

# VISTA Pro UV Reflection Tester

1 x VISTA Pro Tester

1 x Universal Charger



A-Latch

B-Ratatable Lid cover

C-Display Area

D-Test Probe

E-Test Platform

F-Charging Socket

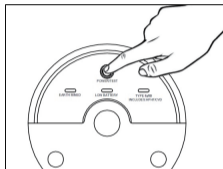
G-Brakets

Note: Charge device for at least 1 hour prior to using it for the first time

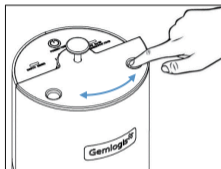


## TO PERFORM TEST

### (1) POWER ON



(I)



(II)

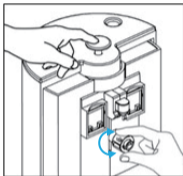
(I) Press and hold the POWER/TEST button for 3 seconds to turn on the device.

Note: The lid cover must be closed prior to powering on.

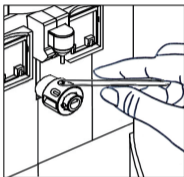
(II) Turn the rotatable lid cover to reveal the testing platform.

The device is ready for testing

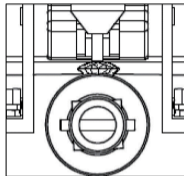
## (2) TO TEST LOOSE STONE



(I)



(II)



(III)

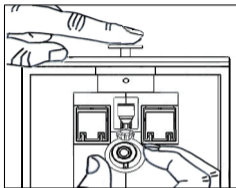
(I) Use one hand to push down the latch to separate the test probe from the platform. Meanwhile, use another hand to rotate the test platform to select a suitable slot for the stone.

(II) Pick up a loose stone using a tweezers and place the stone on the platform pit.

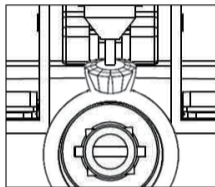
(III) Slowly release the latch to allow the probe to contact with the table center of the stone.

(IV) Close the Lid Cover and press the POWER/TEST button to begin testing.

### (3) TO TEST STONE MOUNTED ON RING



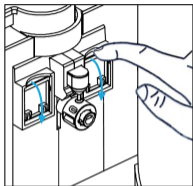
(I)



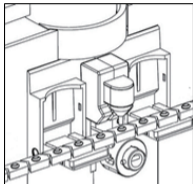
(II)

- (I) Use one hand to push down the latch to separate the test probe from the platform. Place the ring with another hand onto the platform.
- (II) Slowly release the latch to allow the probe to contact with the table center of the stone.
- (III) Close the Lid Cover and press the POWER/TEST button to begin testing.

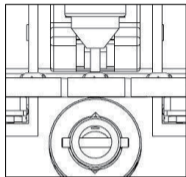
#### (4) TO TEST STONE MOUNTED ON BRACELET AND NECKLACE



(I)



(II)



(III)

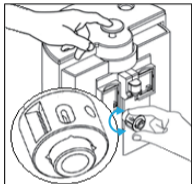
(I) Pull down the left and right brackets beside the platform.

(II) Use one hand to push down the latch to separate the test probe from the platform. Place the bracelet or necklace with another hand onto the platform.

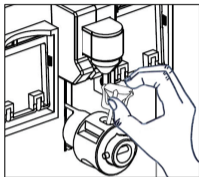
(III) Slowly release the latch to allow the probe to contact with the table center of the stone.

(IV) Close Lid cover and press the POWER/TEST button to begin testing.

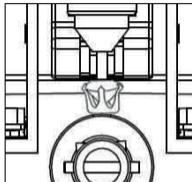
## (5) TO TEST STONE MOUNTED ON EARRING WITH STUD



(I)



(II)



(III)

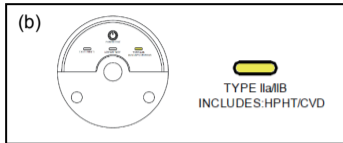
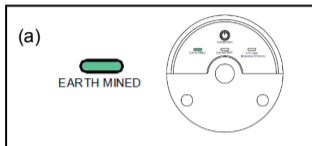
(I) Use one hand to push down the latch to separate the test probe from the platform. Meanwhile, use another hand to rotate the test platform to select a suitable slot for the earring. (As shown above)

(II) Place and insert the stud of the earring with another hand into the platform.

(III) Slowly release the latch to allow the probe to contact with the table center of the stone.

(IV) Close Lid cover and press the POWER/TEST button to begin testing.

## (6) READING THE TEST RESULT



### (a) Green LED = Earth Mined

The diamond has not been enhanced by HPHT treatment.  
Can be considered as a Natural Diamond.

### (b) Orange LED = HPHT / CVD

The diamond may be synthetic or color enhanced by HPHT treatment.  
Recommend to send the stone to a gem laboratory for further examination.

### Remarks:

- \*The Gemlogis Vista Pro does not specifically confirm whether a natural diamond has been enhanced by HPHT treatment.
- \* Results may differ if the table of the gemstone is not touching the Detector Rod.



## PRODUCT FEATURES:

- A compact, convenient tester to determine if a gemstone is Earth Mined (Natural) or HPHT treated/Lab Created (CVD) Diamond.
- Tests loose stones and stones with different type of mounting, from .02ct to 12 ct
- Colorless Diamond (D-J color)
- Portable
- Battery Status indicator: Red LED constant = Full, Red LED Blinking = Low Battery
- One year factory warranty
- Automatic power down to optimize battery life span. The tester goes into sleep mode after 10 minutes of inactivity

Product Dimension (mm):	121D x 204H
Weight (g):	940 ± 10g
Battery Info:	YT751448(Lithium-Polymer Battery 450 mAh)
Operating Time (Hrs):	5hrs non-stop. 1440hrs standby

## DISCLAIMERS & LIMITATION OF LIABILITY:

Due to continuous product enhancements, Jubilee Diamond Instrument reserves the right to revise all documents including the right to make changes the handbook without notice and without obligation to notify any person of such revisions or changes. Users are advised to check Gemlogis' website for latest updates. <http://www.gemlogis.com>

To the maximum extent permitted by applicable law, under no circumstances shall Jubilee Diamond Instrument, its manufacturer or any of its subsidiaries, licensors, distributors, resellers, servant and/or agent be liable for any special, incidental, consequential or indirect damages howsoever caused. The product referred to in this manual is provided and/or sold on "as is" basis. Except as required by applicable law, no warranties of any kind, either expressed or implied, including, but not limited to, the implied warranties of merchantability and fitness for a particular purpose.

For further support: [support@jubileediamond.com.hk](mailto:support@jubileediamond.com.hk)

A product of Jubilee Diamond Instrument Ltd. Designed in Singapore. Produced in China.

## TERMS & WARRANTY:

- This product is covered by 12 month Factory Warranty
- Defects in material and workmanship are covered under this warranty
- Warranty will be voided by unauthorized repair, modification, tempering, accidental damage, negligence or improper use
- Warranty period takes effect from the date of original purchase
- Original Invoice must be shown in order to exercise the terms of factory warranty
- In the event that this model is no longer available or has been discontinued but warranty coverage is still valid, at the sole discretion of the manufacturer, an equivalent device may be substituted in place of the defective model.
- The purchase of the product shall incur the cost for postage insurance and handling for all warranty covered and non-warranty covered repairs.
- Under no circumstances shall the manufacturer, Jubilee Diamond Instrument Ltd. or any of its subsidiaries distributors or third party resellers be liable for any direct or indirect damages resulting from the use of this instrument

 [www.gemlogis.com](http://www.gemlogis.com)

Email: [support@jubileediamond.com.hk](mailto:support@jubileediamond.com.hk)